



MILWAUKEE
PUBLIC LIBRARY

Meeting Spaces



- Information & Capacities 1
- Setup Styles..... 2
- Atkinson Branch..... 3
- Bay View Branch 3
- Capitol Branch 4
- Center Street Branch 5
- East Branch 6
- Good Hope Branch 7
- Martin Luther King Branch 8
- Milwaukee Central Library .9-10
- Mitchell Street Branch.....11
- Tippecanoe Branch12
- Villard Square Branch13
- Washington Park Branch.....14
- Zablocki Branch14



Meeting Spaces

COMMUNITY ROOMS								
LOCATION	SIZE	MIN. CAPACITY	MAX. CAPACITY	NO. OF CHAIRS	NO. OF TABLES & SIZES			
					4'	5'	6'	8'
Atkinson Branch	22' x 26'	1	50	50	-	-	2	6
Bay View Branch	23' x 42'	1	80	80	-	-	-	6
Capitol Branch	24' x 27'	9	60	50	-	-	-	6
Center Street Branch	25' x 38'	10	60	60	-	-	4	12
East Branch	24' x 44'	10	85	85	-	12	-	-
Good Hope Branch	24' x 35'	9	75	75	-	12	-	-
Milwaukee Central Library	25' x 42'	10	85	85	-	-	8	-
Mitchell Street Branch	30' x 48'	10	75	75	-	13	-	-
Tippecanoe Branch	42' x 43'	10	80	71	11	2	-	-
Villard Square Branch	27' x 30'	9	85	85	11	-	-	-
Washington Park Branch	32' x 33'	10	90	90	-	17	-	-
Zablocki Branch	30' x 40'	1	80	63	-	-	4	4

LOCATION	SPACE NAME	SEATED OCCUPANCY
Capitol Branch	Conference Room	8
Center Street Branch	Conference Room	12
Bay View Branch	Study Room	10
East Branch	Study Room 115	10
East Branch	Study Room 116	5
Good Hope Branch	Group Study Room 1	8
Good Hope Branch	Study Room 2	4
Good Hope Branch	Group Study Room 3	2
Milwaukee Central Library	East View Conference Room	16
Milwaukee Central Library	Paul Gottfried Krikelas Technology Conference Room	14
Milwaukee Central Library	Business Commons - Collaboration	6
Milwaukee Central Library	Business Commons - Connection	6
Mitchell Street Branch	Study Room 205	14
Mitchell Street Branch	Study Room 203	4
Mitchell Street Branch	Study Room 202	4
Tippecanoe Branch	Study Room	10
Villard Square Branch	Large Study Room	8
Villard Square Branch	Small Study Room	4
Washington Park Branch	Conference Room	10

OTHER SPACES AT MILWAUKEE CENTRAL LIBRARY	CAPACITY
Rotunda (for photo shoots only)	15
Business Commons - Coworking Counter	Combination Options: Table of 12 Seats (1 available) Table of 6 Seats (2 available) Individual Seat (12 available)
Business Commons – The Huddle (1-2)	10
Business Commons – Collaboration Table (1-3)	4
Business Commons - Window Coworking Counter	4
Business Commons - Semi-Private Workspace (1-4)	1

MPL Community Rooms are large meeting spaces with a variety of setup possibilities.

Conference and Study Rooms are quiet meeting spaces with a fixed setup, ideal for smaller groups.

All MPL meeting spaces have access to WiFi.

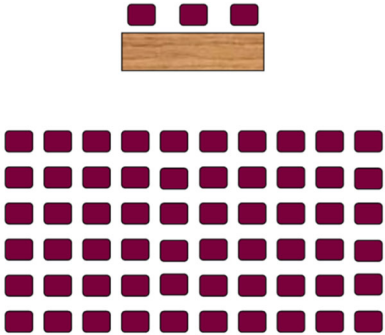
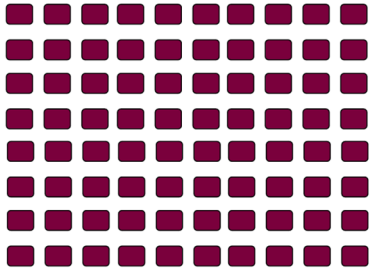
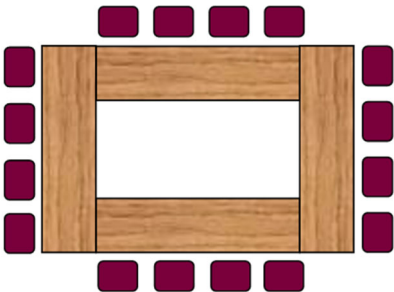
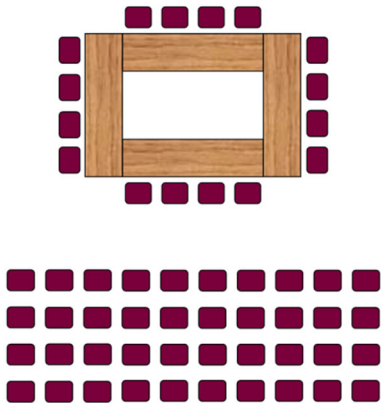
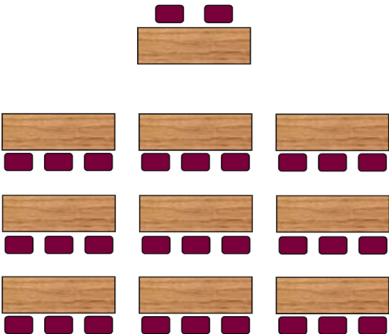
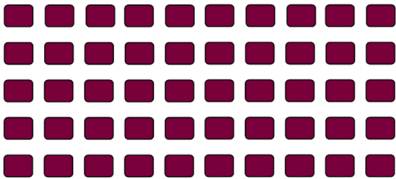
Availability of markers and chalk cannot be guaranteed, so **please bring your own.**

MPL laptops may be checked out for use inside all meeting spaces for patrons who have a laptop agreement on file.

Select a Page:

Samples of Commonly Used Setup Styles

****Patrons are responsible for setting up and restoring the room to the original condition.****

Setup #1 - Theater	Setup #2 - Audience
<p>One head table with theater seating for number of attendees.</p> 	<p>No head table with audience style seating for number of attendees.</p> 
Setup #3 - General Meeting	Setup #4 - General Meeting with Audience
<p>Tables set up in a square or rectangle with seating for number of attendees and as space allows.</p> 	<p>Head tables set up in general meeting style with audience seating for remaining attendees as space allows.</p> 
Setup #5 - Classroom	Setup #6 - Children's Meeting
<p>One head table with tables set up in classroom style for number of attendees and as space allows.</p> 	<p>No head table - leave open floor space for front 1/3 of room with audience style behind open space for adult seating.</p> 

Select a Page:

ATKINSON BRANCH

1960 West Atkinson Avenue



Community Room

22' x 26'

Accommodates up to 50 people

Features:

- Blu-ray player
- Chalkboard
- Flipchart
- Laptop speakers
- Projector and screen
- Sink
- Whiteboard

BAY VIEW BRANCH

2566 South Kinnickinnic Avenue



Llewellyn Community Room

23' x 42'

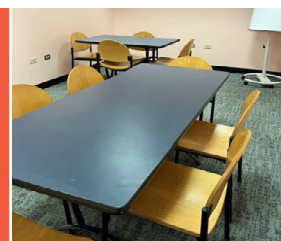
Accommodates up to 80 people

Features:

- Blu-ray player
- Flipchart
- Laptop speakers
- Lectern without microphone
- Projector and screen
- Whiteboard

Study Room

Accommodates up to 10 people and features two tables and a whiteboard.



Select a Page:

[Information & Capacities](#)

[Setups](#)

[Atkinson Branch](#)

[Bay View Branch](#)

[Capitol Branch](#)

[Center Street Branch](#)

[East Branch](#)

[Good Hope Branch](#)

[Martin Luther King Branch](#)

[Milwaukee Central Library](#)

[Mitchell Street Branch](#)

[Tippecanoe Branch](#)

[Villard Square Branch](#)

[Washington Park Branch](#)

[Zablocki Branch](#)

CAPITOL BRANCH

3969 North 74th Street



Community Room

24' x 27'

Accommodates 9 to 60 people

Features:

- Blu-ray player
- Flannel board
- Laptop speakers
- Projector and screen
- Whiteboard

Conference Room

Accommodates up to 8 people.



Select a Page:

[Information & Capacities](#)

[Setups](#)

[Atkinson Branch](#)

[Bay View Branch](#)

[Capitol Branch](#)

[Center Street Branch](#)

[East Branch](#)

[Good Hope Branch](#)

[Martin Luther King Branch](#)

[Milwaukee Central Library](#)

[Mitchell Street Branch](#)

[Tippecanoe Branch](#)

[Villard Square Branch](#)

[Washington Park Branch](#)

[Zablocki Branch](#)

CENTER STREET BRANCH

2727 West Fond du Lac Avenue



Community Room

25' x 38'

Accommodates 10 to 60 people

Features:

- Blu-ray player
- Chalkboard
- Coat rack
- Flipchart
- Laptop speakers
- Lectern with microphone
- Projector and screen
- Whiteboard

Conference Room

Accommodates up to 12 people and features chalkboard and projection screen.



Select a Page:

[Information & Capacities](#)

[Setups](#)

[Atkinson Branch](#)

[Bay View Branch](#)

[Capitol Branch](#)

[Center Street Branch](#)

[East Branch](#)

[Good Hope Branch](#)

[Martin Luther King Branch](#)

[Milwaukee Central Library](#)

[Mitchell Street Branch](#)

[Tippecanoe Branch](#)

[Villard Square Branch](#)

[Washington Park Branch](#)

[Zablocki Branch](#)

EAST BRANCH

2320 North Cramer Street



Community Room, Gift of Lucile Krug

24' x 44'

Accommodates 10 to 85 people

Features:

- Blu-ray player
- Coat rack
- Digital screen
- Flipchart
- Lectern without microphone
- Whiteboard

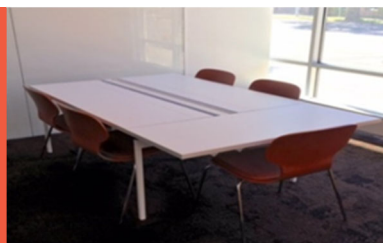
Study Room 115

Accommodates up to 10 people and features laptop speakers and whiteboard.



Study Room 116

Accommodates up to 5 people and features a whiteboard.



Select a Page:

[Information & Capacities](#)

[Setups](#)

[Atkinson Branch](#)

[Bay View Branch](#)

[Capitol Branch](#)

[Center Street Branch](#)

[East Branch](#)

[Good Hope Branch](#)

[Martin Luther King Branch](#)

[Milwaukee Central Library](#)

[Mitchell Street Branch](#)

[Tippecanoe Branch](#)

[Villard Square Branch](#)

[Washington Park Branch](#)

[Zablocki Branch](#)

GOOD HOPE BRANCH

7715 West Good Hope Road



Community Room

24' x 35'

Accommodates 9 to 75 people

Features:

- Blu-ray player
- Digital screen with wireless connections
- Flipchart
- Lectern without microphone
- Whiteboard

Group Study Room 1

Accommodates up to 8 people and features laptop speakers.



Study Room 2

Accommodates up to 4 people.



Study Room 3

Accommodates up to 2 people.



Select a Page:

[Information & Capacities](#)

[Setups](#)

[Atkinson Branch](#)

[Bay View Branch](#)

[Capitol Branch](#)

[Center Street Branch](#)

[East Branch](#)

[Good Hope Branch](#)

[Martin Luther King Branch](#)

[Milwaukee Central Library](#)

[Mitchell Street Branch](#)

[Tippecanoe Branch](#)

[Villard Square Branch](#)

[Washington Park Branch](#)

[Zablocki Branch](#)

MARTIN LUTHER KING BRANCH

2767 North Martin Luther King Junior Drive



**Meeting Spaces Closed
Temporarily During Transition**

New building will reopen at new address in Fall 2024.

Select a Page:

[Information & Capacities](#)

[Setups](#)

[Atkinson Branch](#)

[Bay View Branch](#)

[Capitol Branch](#)

[Center Street Branch](#)

[East Branch](#)

[Good Hope Branch](#)

[Martin Luther King Branch](#)

[Milwaukee Central Library](#)

[Mitchell Street Branch](#)

[Tippecanoe Branch](#)

[Villard Square Branch](#)

[Washington Park Branch](#)

[Zablocki Branch](#)

MILWAUKEE CENTRAL LIBRARY

814 West Wisconsin Avenue



Rotary Club of Milwaukee Community Room

25' x 42'

Accommodates 10 to 85 people

Features:

- Coat Rack
- Digital screen
- Flipchart
- Lectern with microphone
- Projector and screen (wireless and sound system)
- Whiteboard

East View Conference Room

Accommodates up to 16 people and features flipchart, projector and whiteboard.



Paul Gottfried Krikelas Technology Conference Room

Accommodates up to 14 people and features DVD player, flipchart, projector and screen, TV, VCR and whiteboard.



Business Commons, Gift of Schoenleber Foundation and Elaine C. Lange - Connection

Accommodates up to 6 people and features a digital screen.



Business Commons, Gift of Schoenleber Foundation and Elaine C. Lange - Collaboration

Accommodates up to 6 people.



Select a Page:

[Information & Capacities](#)

[Setups](#)

[Atkinson Branch](#)

[Bay View Branch](#)

[Capitol Branch](#)

[Center Street Branch](#)

[East Branch](#)

[Good Hope Branch](#)

[Martin Luther King Branch](#)

[Milwaukee Central Library](#)

[Mitchell Street Branch](#)

[Tippecanoe Branch](#)

[Villard Square Branch](#)

[Washington Park Branch](#)

[Zablocki Branch](#)

MILWAUKEE CENTRAL LIBRARY

814 West Wisconsin Avenue

Business Commons, Gift of Schoenleber Foundation and Elaine C. Lange - Business Commons - Coworking Counter Seat

A shared coworking counter, equipped with power and USB outlets. Can be reserved individually, or in groups of 6 seats or 12 seats.



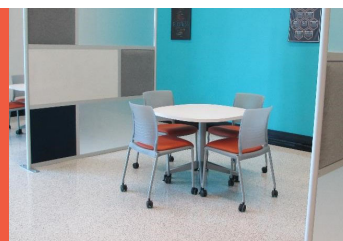
Business Commons, Gift of Schoenleber Foundation and Elaine C. Lange - The Huddle 1-2

Lounge seating equipped with power and USB outlets, encircling a center accent table, accommodating 4 to 10 people.



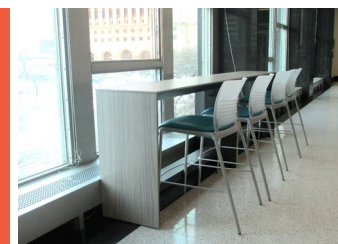
Business Commons, Gift of Schoenleber Foundation and Elaine C. Lange - Collaboration Table (1-3)

A semi-private workspace, ideal for small groups of up to 4 people.



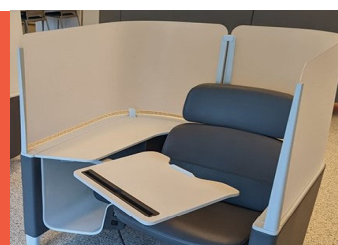
Business Commons, Gift of Schoenleber Foundation and Elaine C. Lange - Business Commons - Window Coworking Counter

A shared counter workspace, ideal for small groups of up to 4 people.



Business Commons, Gift of Schoenleber Foundation and Elaine C. Lange - Business Commons - Semi-Private Workspace (1-4)

Four semi-private workspaces for individual use, equipped with power and USB outlets.



Rotunda

Elegant setting and atmosphere provides an impressive backdrop for photoshoots, accommodating up to 15 people, up to 2 hours per use. Minors must accompanied by adults.



Select a Page:

[Information & Capacities](#)

[Setups](#)

[Atkinson Branch](#)

[Bay View Branch](#)

[Capitol Branch](#)

[Center Street Branch](#)

[East Branch](#)

[Good Hope Branch](#)

[Martin Luther King Branch](#)

[Milwaukee Central Library](#)

[Mitchell Street Branch](#)

[Tippecanoe Branch](#)

[Villard Square Branch](#)

[Washington Park Branch](#)

[Zablocki Branch](#)

MITCHELL STREET BRANCH

906 West Historical Mitchell Street



Community Room

30' x 48'

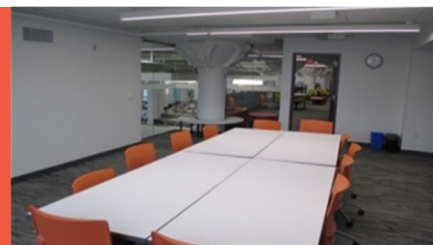
Accommodates 10 to 75 people

Features:

- Coat rack
- Digital screen
- Flipchart
- Laptop speakers
- Lectern with microphone
- Whiteboard

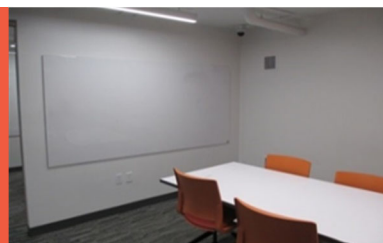
Study Room 205

Accommodates up to 14 people and features a projector and whiteboard.



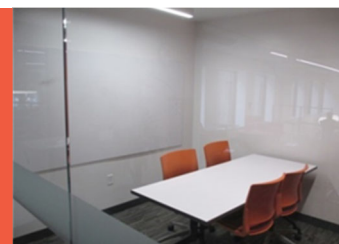
Study Room 203

Accommodates up to 4 people and features a whiteboard.



Study Room 202

Accommodates up to 4 people and features a whiteboard.



Select a Page:

[Information & Capacities](#)

[Setups](#)

[Atkinson Branch](#)

[Bay View Branch](#)

[Capitol Branch](#)

[Center Street Branch](#)

[East Branch](#)

[Good Hope Branch](#)

[Martin Luther King Branch](#)

[Milwaukee Central Library](#)

[Mitchell Street Branch](#)

[Tippecanoe Branch](#)

[Villard Square Branch](#)

[Washington Park Branch](#)

[Zablocki Branch](#)

TIPPECANOE BRANCH

3912 South Howell Avenue



Community Room, Gift of Heather Hurley

42' x 43'

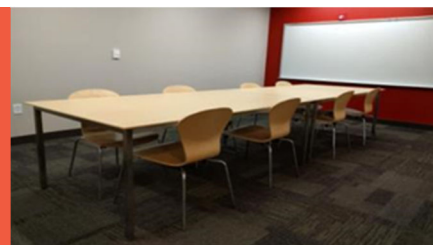
Accommodates 10 to 80 people

Features:

- Digital screen
- Flipchart
- Lectern without microphone
- Whiteboard

Study Room

Accommodates up to 10 people and features a whiteboard.



Select a Page:

[Information & Capacities](#)

[Setups](#)

[Atkinson Branch](#)

[Bay View Branch](#)

[Capitol Branch](#)

[Center Street Branch](#)

[East Branch](#)

[Good Hope Branch](#)

[Martin Luther King Branch](#)

[Milwaukee Central Library](#)

[Mitchell Street Branch](#)

[Tippecanoe Branch](#)

[Villard Square Branch](#)

[Washington Park Branch](#)

[Zablocki Branch](#)

VILLARD SQUARE BRANCH

5190 North 35th Street



Community Room,

27' x 30'

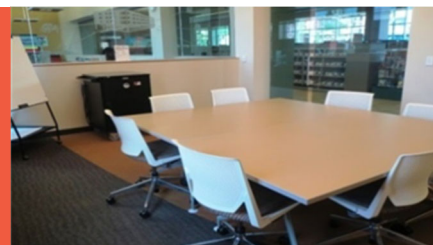
Accommodates 9 to 85 people

Features:

- Digital screen
- Flipchart
- Laptop speakers
- Lectern without microphone
- Whiteboard

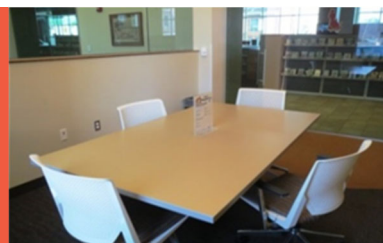
Large Study Room

Accommodates up to 8 people.



Small Study Room

Accommodates up to 4 people.



Select a Page:

[Information & Capacities](#)

[Setups](#)

[Atkinson Branch](#)

[Bay View Branch](#)

[Capitol Branch](#)

[Center Street Branch](#)

[East Branch](#)

[Good Hope Branch](#)

[Martin Luther King Branch](#)

[Milwaukee Central Library](#)

[Mitchell Street Branch](#)

[Tippecanoe Branch](#)

[Villard Square Branch](#)

[Washington Park Branch](#)

[Zablocki Branch](#)

WASHINGTON PARK BRANCH

2121 North Sherman Boulevard



Finney Community Room

32' x 33'

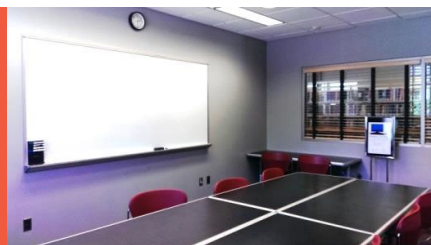
Accommodates 10 to 90 people

Features:

- Blu-ray player
- Flipchart
- Laptop speakers
- Lectern (tabletop) with microphone
- Projector and screen
- Sink
- Whiteboard

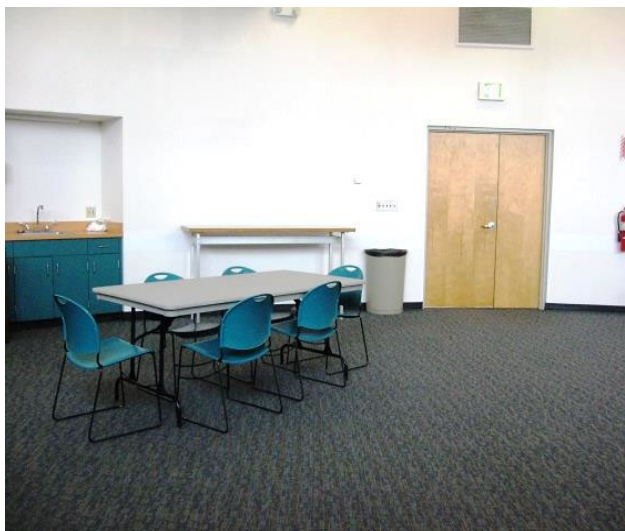
Conference Room

Accommodates up to 10 people and features a whiteboard.



ZABLOCKI BRANCH

3501 West Oklahoma Avenue



Community Room

29' x 40'

Accommodates up to 80 people

Features:

- Blu-ray player
- Chalkboard
- Flipchart
- Laptop speakers
- Lectern with microphone
- Projector and screen
- Sink and countertop
- Whiteboard

Select a Page:

[Information & Capacities](#)

[Setups](#)

[Atkinson Branch](#)

[Bay View Branch](#)

[Capitol Branch](#)

[Center Street Branch](#)

[East Branch](#)

[Good Hope Branch](#)

[Martin Luther King Branch](#)

[Milwaukee Central Library](#)

[Mitchell Street Branch](#)

[Tippecanoe Branch](#)

[Villard Square Branch](#)

[Washington Park Branch](#)

[Zablocki Branch](#)